

News & Views



SOPHE'S NEW 5-YEAR PLAN: THE JOURNEY AHEAD

SELECTED TOPICS:

PRESIDENT'S LETTER	2
HOW DID WE DO?	3
CALL FOR ABSTRACTS	3
ADVOCACY UPDATE	4
NEW SOPHE MEMBERS	4
AWARD WINNERS	5
CHAPTER NEWS	6
BUSINESS BYTES	6
JOURNAL HIGHLIGHTS	7
COMMUNITIES OF PRACTICE	7
NEW SUMMER INTERNS	8
MEMBERS ON THE MOVE	8
UPCOMING EVENTS	8

Builds on Progress 2017-2020

SOPHE BOARD ADOPTS NEW MISSION AND 5-YEAR STRATEGIC PLAN

At its annual meeting in March, [SOPHE's Board of Trustees](#) approved a new mission statement and strategic plan to guide SOPHE's work for 2021-2025.

The [updated mission statement](#) and plan builds on considerable progress made during the last four years (see page 3) and sets new directions for more purposeful activities in racial and health equity.

The Strategic Planning Committee, chaired by Trustee Cherylee Sherry, sought input from SOPHE leaders, National and chapter members, and donors through surveys, focus groups, and town halls throughout the year. The new plan evolved despite the year of immense uncertainty and upheaval, including the COVID-19 pandemic and long-overdue conversations about racial justice.

SOPHE's revised mission statement, *"Supporting leaders in health education and promotion to advance healthy and equitable communities across the globe,"* has three distinct components. First, it confirms

that health education and promotion professionals at every level are trailblazers in applying our discipline's theory, research, or practice. Second, it reflects SOPHE's aspirational goal of serving professionals around the world, which have been elevated by the dramatic impacts of the pandemic and technological advancements. Third, the new mission statement directly reflects SOPHE's *raison d'être*— to address health equity as a means of achieving well-being for all.

Each of the new four strategies and/or goals direct SOPHE's expanded work in health equity in professional development, research, practice, pedagogy, advocacy, and organizational excellence.

"The new plan is a testament to the forward-thinking, hard work and dedication of the SOPHE Board of Trustees, staff, members, and its strategic planning committee," said Sherry. "Our next step will be to adopt metrics for each of the goals that will help us track our progress over the next five years,

using the Results-based Accountability™ (RBA) approach."

The RBA™ framework has become increasingly popular in communities, and drives leaders to ask the questions:

- How much did we do?
- How well did we do it?
- Is anyone better off?

SOPHE will now work with committees, CoPs, chapters, staff, journal editors, and editorial boards to help determine the specific indicators that will be used to measure accomplishment of each of the eight strategies and related data collection methods. Members who would like to join the Strategic Planning Committee are welcome and should contact [Cherylee Sherry](#).

[The 2021-2025 Strategic Plan Mission](#)

Supporting leaders in health education and promotion to advance healthy and equitable communities across the globe.

2021-22 SOPHE OFFICERS

PRESIDENT

Deborah Fortune, PhD, FAAHE

PRESIDENT-ELECT

Amy Thompson, PhD, CHES®

TREASURER

William H. Potts-Datema, DrPH, MS, MCHES®

SECRETARY

Rachael Dombrowski, PhD, MPH

IMMEDIATE PAST PRESIDENT

Cam Escoffery, PhD, MPH, CHES®

TRUSTEES

2022 Annual Conference

Kirsten Rodgers, EdD, MSPH, MCHES®

Advocacy & Resolutions

Sabrina Tindal Cherry, DrPH, MSPH, MTS

Communications

Beth Chaney, PhD, MCHES®

Membership & Leadership Dev

Antonio Gardner, PhD, MS, CHES®

Professional Dev & Continuing Education

Ninfa Peña-Purcell, PhD, MCHES®

Professional Preparation

Ashley Parks, DrPH, MPH, MBA, MTech,

MCHES®, CPH

Publications

Lisa Lieberman, PhD, CHES®

Research & Ethics

Jody Vogelzang, PhD, RDN, CHES®, FAND

Strategic Development

Cherylee Sherry, MPH, MCHES®

Student Trustee

Janae Alexander, MPH

Speaker of the House

Charity Bishop, MA, CHES®

Delegate Trustee

Josephine Lara, MPH

Delegate Trustee

Tara Lutz, PhD, MPH, MCHES®

Delegate Trustee

Tina Jacob, MPH, CHES®

Chief Executive Officer

Elaine Auld, MPH, MCHES®

SOPHE STAFF

Daniel Anbiah, MA, MBA, CMA

Maricela Arias-Cantu, MS, MHA

Elaine Auld, MPH, MCHES®

Jordan Buckley, MPH, CHES®

Iris Chou

Heather Flattery, MPH, CHES®

Zebley Foster, BA

Eryn Greaney, BS

Shadia Henson, BA

Brigitte Johnson, APR, MSM

Amy Overby, MS, CAE

Jeanine Robitaille, MS, CHES®

Doreleena Sammons Hackett, SM

Antoinette Silva, MSA

EDITOR

Zebley Foster, BA

© The Society for Public Health Education

10 G Street, NE, Suite 605

Washington, DC 20002

Phone: 202.408.9804

Fax: 202.408.9815

Web site: www.sophe.org

[@SOPHEtweets](https://twitter.com/SOPHEtweets)

PRESIDENT'S LETTER

CHANGE, THE ONLY CONSTANT: REIMAGINING SOPHE

Hello everyone,

I bring you greetings from the illustrious [North Carolina Central University \(NCCU\)](#), which is a historically black university located in Durham, North Carolina, that was founded in 1910. I am a faculty member in the [Department of Public Health Education](#) that has a rich history of preparing African American entry-level health educators for approximately 73 years. Additionally, I serve as the NCAA faculty athletics representative (FAR) for NCCU. As the representative, I have had the opportunity to support and advocate for the health and well-being of student-athletes, including promoting mental health well-being.

For the past year, as the president-elect, I had the privilege to work with Dr. Cam Escoffery, Dr. Jean Breny, and Elaine Auld. Thank you all for your guidance and assistance with transitioning to the presidency.

With support from SOPHE's board and membership, I will address the following two goals as my platform during the upcoming year:

1. **Expand our reach to minority-serving institutions, particularly historically black colleges and universities ([HBCUs](#)) and [Hispanic Serving Institutions](#).**

We started laying the foundation for this goal during my president-elect tenure by creating the HBCUs Advisory Council (HAC), which consists of representatives from various HBCUs. HAC is charged with increasing awareness of SOPHE as a professional association among health and physical education faculty; increasing membership from HBCUs; increasing people of color in SOPHE leadership positions; and increasing presentations from HBCUs at SOPHE conferences. Additionally, the council will assist SOPHE in improving its linkage to HBCUs as partners for addressing health disparities to improve health equity for African Americans and other racial minorities.

In collaboration with HAC, SOPHE will continue to offer webinars and other activities to address the disparity of [COVID-19](#). Also, we will highlight and share strategies that HBCUs have implemented to dispel misinformation and encourage COVID vaccine uptake among African Americans.

Further, we encourage HBCU faculty to model getting the COVID shot for their students. I shared the following picture with students on my campus. Dr. Reginald Fennell, health education professor emeritus at Miami University of Ohio, is administering the shot. Currently, he serves as the nurse practitioner in the Student Health Center at NCCU.

2. **Provide resources to health educators in the school settings, such as continuing education for school health educators at SOPHE annual meetings and updating the national health education standards.**

The past year ushered in many changes and caused us to adopt new norms of functioning as a society. SOPHE has been going through its changes as well, in part, due to COVID and also the responding to the needs of its members. Currently, we are working on rebranding SOPHE and reimagining the Society's governance structure. Additional priorities for my presidency include continuing the work of the health equity and anti-racism taskforce (started by Dr. Jean Breny) and increasing membership.

Thank you for the opportunity to serve as the 2021-2022 President of SOPHE. I look forward to working with you to achieve my platform goals and other priorities as we reimagine SOPHE and the field of health education.

Sincerely,



DEBORAH
FORTUNE, PHD,
FAAHE



Strategy #1:

Strengthen health education and promotion capacity to achieve health equity

Goals:

1. Provide pre-service and in-service development opportunities to achieve health equity and increase the diversity of the profession
2. Expand leadership development to include anti-racism training that ensures an infrastructure for equity and inclusion

Strategy #2:

Advance health education and promotion pedagogy, practice and research

Goals:

1. Increase the reach and impact of SOPHE's peer-reviewed journals
2. Promote emerging and promising areas for health education research, practice, and pedagogy, with a focus on scientific gaps efforts that address social determinants of health

Strategy #3:

Promote and advocate for health-equity enhancing systems and policies

Goals:

1. Strengthen advocacy impact and effectiveness to address health promotion, prevention, and health equity priorities
2. Increase public and partner knowledge and support for the profession of health education and promotion as leaders in health equity

Strategy #4:

Support operational excellence to achieve the greatest public health impact possible

Goals:

1. Strengthen SOPHE's operational performance practices
2. Ensure organizational policies and procedures that promote anti-racism and advance health equity

**CALL FOR ABSTRACTS:
SOPHE 2022 ANNUAL
MEETING**

DEADLINE: JULY 19

Theme: Health Education: The ARCH of an Era

Accelerating the Recovery of Communities and Health (ARCH) requires innovation, collaboration, and systems-level approaches that are inclusive, anti-racist, and equitable for all. The Arch of an Era illustrates the escalation of a worldwide crisis, the public health response and the recovery among communities. The ARCH represents the countless efforts of health education over the last two decades and the start of a new era.

Submit an abstract in four education tracks:

- Diversity, Equity and Inclusion
- Health Education Workforce Development
- Policy, Systems, and Environmental Changes
- Interprofessional Practice

◀ Click here to learn more

**SOPHE STRATEGIC PLAN
2017-2020: HOW DID
WE DO?**

SOPHE's new strategic plan, the Strategic Planning Committee and leaders took a hard look at the accomplishments of its Strategic Plan from 2017 to 2020. Data over the four years, when available, were collected and analyzed based on the specific metrics the board established under the Results-based Accountability™ framework.

SOPHE made progress in almost every strategy. More work needs to be done in increasing the percentage of CHES/MCHES who get their CECH from reading articles in SOPHE journals and CORE offerings. While SOPHE continued to provide many continuing education opportunities, our efforts have not kept pace with the growth of CHES/MCHES over the last four years and attracting them to SOPHE offerings.

In terms of advocacy, the numbers of SOPHE members engaged in national, state or local

Strategy	Results
1 Build health education/health promotion capacity % of CHES/MCHES professionals globally who meet some of their requirements through SOPHE/Chapters.	↑
2 Advance health education/health promotion knowledge, practice and research % of CHES/MCHES with Category 1 CECH earned from reading articles from SOPHE Journals and SOPHE CORE offerings. % of SOPHE Journal articles, position statements and resolutions that directly or indirectly address health equity issues.	↓
3 Promote and advocate for health-enhancing systems and policies % of SOPHE provided CEU credits that address advocacy and communications competencies	→
4 Maximize operational performance # of months of operating expenses in reserve % of SOPHE membership who donate to the 21 st Century Fund or other named SOPHE funds	↑

advocacy has ranged from 83% to 51%; and the number of CEUs offered in this area has gone from 313 in 2017 to 8,460 in 2020.

Several metrics originally established in 2017 were not feasible to track due to

cost, practicality, staff time/effort. Going forward, the Strategic Planning Committee will work with SOPHE staff to compose a SOPHE Metrics Manual for practicality and consistency in collecting data over time via surveys and other methods.

SOPHE'S 23RD ANNUAL ADVOCACY SUMMIT

October 13-14, 2021

Health Education: Advancing Health Equity at Every Level

[SOPHE's 23rd Annual Advocacy Summit](#) will be held virtually October 13-14, 2021. This year's summit will bring social determinants of health (SDOH) and health equity to the forefront and advocate for important policy changes to protect the public's health. The summit will focus on innovative policies, systems or programs that address, dismantle, or eliminate the SDOH barriers contributing to health inequities (e.g., access and quality of health care, access and quality of education, discrimination, racism, neighborhood/built environment).



The summit will focus on four tracks

- social determinants of health and [health equity](#),
- equity focused advocacy skill-building,
- incorporating equity focused advocacy in the classroom, and
- a new student poster track.

The fourth track will showcase undergraduate and graduate students working on advocacy-related research, policy briefs, communication campaigns, student internships, and coalitions on and off their campuses that address SDOH and [health equity](#) across a broad range of topics. Registration is now open! Register before September 13 to take advantage of [early bird rates](#).

For more information on this year's innovative virtual format, tentative agenda, and sponsorship opportunities, see www.sophe.org



RECOGNITION OF NEW SOPHE MEMBERS

Welcome to the following new SOPHE members who joined January - May, 2021

Hanan Abdul Rahim
 Abby Abram
 Cali Anderson
 Maureen Andreovich
 Paige D. Arvidson
 Jeanette Ashworth
 Laura Beckmann
 Amy Bednar
 Kaitlin Belovich
 Sarah Benes
 Stefanie S. Bollheimer
 Nicole Bosley
 Cynthia Williams Brown
 William Hunter Brown
 Edward Bunce
 Jeannette Burgos
 Ashlee J. Burt
 Dan Bustillos
 Autumn Cammarata
 Lilya Chakhoyan
 Jon Cameron Chavis
 Lori L. Clavette
 Jessie A. Coffey
 Alminda D'Agostino
 Gwendolyn Devins
 Emily Dimond
 Megan Elizabeth Drissell
 Tiffany Edgar

Joseph Fiorelli
 Kristine Fleming
 Tristan Fletcher
 Quinten Daniel Lee Foster
 Kendal Francoletti
 Bret Frazier
 Jonathan Fuller
 Kimela Glenn
 Katie Greenawalt
 Aline Camille Gubrium
 Holly Marie Gumm
 Ava Hacopian
 Mary L. Harper-Yancey
 Cassandra Harris
 Kenyatta Harris
 Keily N. Hayes
 Eboni E. Haynes
 Kellie Henrichs
 Rosalba Hernandez
 Brandon Horton
 Edquan Hudgeon
 Kara Hughes
 Sabah Hussein
 Jade Hutchins
 Avril James
 Celeste Ann Jennings
 Aimee Johnson
 Jacob Allen Johnson
 Jacquita Nicole Johnson
 Macie Danielle Johnson
 Kimberly L. Jones
 Claudette U. Kabera

James Burton Kauffman, IV
 Chelsea Kavanaugh
 Allyson Khau
 Katherine K. Kim
 Brenna O. Kirk
 Deja Knight
 Cathy Kodama
 Victoria Krauss
 Stephanie Krieg
 Lori Kuykendall
 Carrie LaChance
 Tina Marie LaCourse
 Casey Christine Landmann
 Rena Large
 Jennipher Moffa Lenoir
 Jackie Leung
 Pamela Denise Long
 Ricardo V. Lopez
 Kevin Lorson
 Alana Martin
 Leah Mayo
 Gina Marie McConeghy
 Brianna McField
 Lucy McLaughlin
 Alexandra Meeks
 Jandelle L. Mesfin
 Alexis Mickevicius
 Mariselle Moscoco
 Lauren Neumann
 Jennifer Vu Nguyen
 Stefani Nixon
 Elena Nuciforo

Nosa Obanor
 Sen Padilla
 Natasha A. Patterson
 Mounika Polavarapu
 Tara Marisa Prairie
 Kelly Prigge
 Emily Provasnik
 Tywana Purkett
 Naglaa Rashwan
 Bianca L'erin Reid
 Yolanda Reynolds
 Ashley Ristaino
 Janesia Robbs
 Juanita Rogers
 Shyanika Rose
 Nathaniel Ross
 Thea Runyan
 Rachel Sadlon
 Daniel Sanchez
 Margo Leathers Sidener
 Dedra Simmons
 Rene L. Stansbury
 Amanda Stearns
 Rolena Stephenson
 Cindy Sullivan
 Lauren Elizabeth Terentiuk
 Danielle Tropea
 Jocelyn Turner
 Lauren Velten
 Samantha Vernon
 Kayla C. Vescovo
 RoAnn Destinee Q. Vilorio

Shealese Washington
 Dana Wawrzyniec
 Veronica Weser
 Kathryn Weston
 Taylor White
 Alicia Whitehead
 Asya Eiana Wideman
 Gloria E. Willson
 Alina Woodford
 Lisa Ziegler

SOPHE AWARD WINNERS

The following awards were presented at the SOPHE 2021dx conference in March. See video highlights of some winners on our [YouTube channel](#).

DISTINGUISHED FELLOW AWARD

- Kenneth R. McLeroy, PhD, MS (posthumous award)

HONORARY FELLOW AWARD

- Anthony S. Fauci, M.D.

ELIZABETH FRIES HEALTH EDUCATION AWARD*

- Spero Manson, PhD

*Awarded by James F. and Sara T. Fries Foundation/CDC Foundation

KAREN DENARD GOLDMAN HEALTH EDUCATION MENTOR AWARD

- Gary Harper, PhD, MPH

HORIZON AWARD

- Nicole Batista

DIGITAL HEALTH TECHNOLOGY & COMMUNICATION AWARD

- Kasondra McCracken, MS, MCHES®

SOPHE CHAPTER AWARD FOR EXCELLENCE

- Utah SOPHE

SOPHE PRESIDENTIAL CITATIONS

- Molly Brown, PhD, MPH
- Jeff Goodman, MPH
- Heidi Hancher-Rauch, PhD, CHES®

SOPHE TROPHY AWARD

- Jean Breny, PhD, MPH
- Jonathan Johnson, LMHC
- Jody Early, PhD, MS, MCHES®

THE VIVIAN DRENCKHAHN STUDENT SCHOLARSHIP AWARD

- Taran Haut
- Natalie Astor
- Amy Blom

SOPHE/CDC STUDENT FELLOWS IN INJURY PREVENTION

- Melanie (Grace) Albright, MA
- Sarah Spafford

SOPHE PATIENT ENGAGEMENT FELLOW

- Ha Ngan (Milkie) Vu, MA

R. BRICK LANCASTER COMMUNITY HEALTH INTERNSHIP AWARD

- Breanna De Leon

GRADUATE STUDENT RESEARCH PAPER

- Janae Tenesha Alexander, MPH

HELEN P. CLEARY SCHOLARSHIP*

*Awarded by NCHCEC

- Katherine Chan
- Shannon Fyalkowski
- Destiny Hayes
- Dayana Leyva
- Robin McClain
- Andrea Vilorio

21ST CENTURY SCHOLARSHIPS Practitioners

- Matthew Weinburke
- Kirsten Rodgers
- Jess Wiedenhoff

Students

- Arden Castle
- Ashlyn Vargas
- Carol Jacob
- Doris Swarn
- Kat Demarco
- Shannon Shimada
- Samantha Mundt
- Subhash Ramakrishnan
- Shanaé Burch
- Megan Williams
- Shelby Duessel
- Vanessa Silverstein

MOST VALUABLE PARTNER (MVP) AWARD

- California State University Northridge

Papers of the Year:

LAWRENCE W. GREEN PAPER OF THE YEAR AWARD

- "LATENT//Missing: On Missing Values, Narrative Power, and Data Politics in Discourse of COVID-19" Vol 47, Issue 5, 2020, Ryan J. Petteway, DrPH, MPH.

PEDAGOGY IN HEALTH PROMOTION PAPER OF THE YEAR AWARD

- "How Do We Explain the Social, Political, and Economic Determinants of Health? A Call for the Inclusion of Social Theories of Health Inequality Within U.S.-Based Public Health Pedagogy" Vol 6, Issue 4, 2020, Michael Harvey, DrPH.

SARAH MAZELIS PAPER OF THE YEAR AWARD

- "Native American Youth Citizen Scientists Uncovering Community Health and Food Security Priorities" Vol 21, Issue 1, 2020, Katherine Kim, PhD, MPH, MBA et al.

#SOPHE2021dx by the Numbers

More than **300** speakers

Session formats included:

- PechaKucha
- Simulive
- Live,
- Pre-recorded, and MORE!

17 exhibitors

100 poster presentations

59.25 CECH provided

325 sessions

\$560 raised for SOPHE 21st Century Fund

Build a **HEALTHY COMMUNITY**

MASTER OF PUBLIC HEALTH COMMUNITY HEALTH EDUCATION

CSUN | CALIFORNIA STATE UNIVERSITY NORTHBRIDGE

UTAH SOPHE



USOPHE partnered with the Utah Public Health Association (UPHA) to hold the Advocacy Academy Webinar Series Summit in January 2021. Each Wednesday during January, experts in the field addressed different topics including:

- Advocacy 101 and the Utah policy making process
- Tips to develop effective talking points and role play on meeting with legislators
- Tips to using the Utah Legislative Website and participating remotely
- Racism is a Public Health Crisis & What We Can Do as the Public Health Workforce

USOPHE encourages members to reach out to local legislators and educate them about important public health specific bills heard during the Utah 2021 legislative session. The chapter's new 2021 president, Alysia Ducuara, represented the chapter on Capitol Hill by speaking to legislators at the House Government Operations Committee who were considering SB195 and HB294. She asked committee members to oppose the bills because they would limit the ability of the state and local health departments and other health professionals to respond to local needs.

- <https://www.youtube.com/watch?v=YJuPEsg9tgY>
- <https://www.youtube.com/watch?v=z3w9bmTzbr0>
- <https://www.youtube.com/watch?v=m2rDaeZGM-Q&t=1s>
- <https://www.youtube.com/watch?v=38Y-qcgWn38>

Connect with us:
Website: <http://usophe.org/>



CONNECTICUT SOPHE



CT SOPHE, SOPHE's newest chapter, was founded in fall 2020 by a group of health education professionals led by founding president and recipient of SOPHE's 2021 Horizon Award, Nicole Batista.

CT SOPHE's kick-off event was a webinar featuring keynote speaker Cam Escoffery, PhD, MPH, MCHES, immediate past president of SOPHE. Her talk, titled "Community-engaged approaches to chronic diseases and self-management," highlighted the importance of prioritizing not only the prevention but ongoing management of chronic diseases in our communities as health educators.

Dr. Jean Breny, PhD, MPH, another former president of SOPHE, and professor and chair of the Department of Public Health at Southern Connecticut State University, also spoke. Dr. Breny shared, "One of my goals as SOPHE president was to start a Connecticut Chapter and I am so proud to see that come to fruition! Although we are a small state, we have several professional preparation programs training health educators, advocates, and health promotion professionals, and the time seemed right to create a local opportunity for our students and practitioners."

The event was attended by 21 participants and offered 1.5 CECH. CT SOPHE is actively seeking new members and partners at the state and national level.

Connect with us:
Website: <https://www.ctsophe.com/>
Email: ct.sophe@gmail.com



MEMBER Q & A

Doris Swarn; Collegiate Champion

Q: Which degree are you seeking?

A: Master's of Public Health: Healthcare Management

Q: What is your Collegiate Champion project?

A: We are excited to offer a speed mentoring event available to anyone interested in working in public health. We introduce students

and young professionals to health professionals by answering questions they have as they enter or change their careers or approach graduation. The event includes professionals from a variety of public health backgrounds from maternal health to injury and prevention.

Q: What's next for you?

A: I would like to continue my education to earn my CHES® credentials and eventually become a leader in my chosen field.

The following actions and meeting items were addressed or approved by the SOPHE Board of Trustees during its annual meeting on March 26, 2021:

Approved the consent agenda including Board minutes 2/10/2021; Executive Committee Minutes 2/17/2021 and 3/17/2021; SOPHE Staff Monthly Highlights, 2/2021; Proposed HE&B Editorial Board Member 2 yr appt – C. Ford; Proposed PHP Editorial Board Member 3 yr appt– N. Powe

Received updates on the SOPHE 2021dX conference and Rebranding Task Force

Accepted and received the report and recommendations of the SOPHE Health Equity and Anti-racism Task Force

Approved the CEO to finalize negotiations with SAGE Publications on a proposed 3-year contract to publish SOPHE's three journals

Received updates from SOPHE's three journal editors in chief and SAGE on their efforts to address diversity, equity and inclusion in scholarly publishing

Approved a resolution to pursue changes to SOPHE's governance structure, based on recommendations of SOPHE Governance 2.0 Task Force

Expressed thanks and appreciation to all outgoing board members for their dedicated service: Jean Breny, Immediate Past President; Jeff Goodman, Treasurer; Molly Brown, Speaker of the House; Nicolette Powe, Trustee, Professional Development & CE; Jody Early, Trustee, Publications; Heidi Hancher-Rauch, Trustee, Advocacy & Resolutions; Rebecca Rich, Student Trustee; Katie Miller, Kaitlin Cartoccio and Charity Bishop, Delegate Trustees.

Pedagogy in Health Promotion

The summer is the perfect time to rethink and reimagine your teaching strategies for the upcoming academic year. The latest June issue of *PHP* will spark inspiration and innovation with articles on Reimagining Best Practices for Teaching; Reimagining Online Learning; and of course, Reimagining the Classroom. “The collection of articles in this issue testifies to the vibrant and dynamic state of teaching in health promotion and public health. We hope these works give you new ideas for energizing and extending the pedagogical boundaries of your courses!” (Merzel, 2021 p 87).



- In addition to each issue, be sure to check out our reading lists on *PHP*'s website:
- Teaching in the Time of COVID
 - Addressing Pedagogy Related to African American Health Promotion
 - Teaching Racial Justice and Equity in Health Promotion and Public Health
 - Online Teaching for Academic Settings
 - Online Teaching for the Health Promotion Workforce

Please continue to share your favorite *PHP* articles with your fellow faculty members and follow us on twitter @PHP_SOPHE

As a reminder, please remember to log into your my.sophe.org account to access full content of all articles, including those most recently published Online First!

Health Promotion Practice

Each June, *HPP* celebrates [PRIDE month](#) by featuring collections of articles on LGBTQ+ health that are available for free. The collection of LGBTQ+ content is growing rapidly, and *HPP* is proud to partner with these scholars to publish and share the work!



Have you read what everyone is talking about? *HPP*'s special supplement, Arts in Public Health was released in May and is available for [free](#).

This pivotal issue highlights the interconnection between the arts and public health and illustrates how the arts can help engage dialogue, promote wellness, and inspire collective action. Be part of the conversation of this rapidly emerging area of public health and share the links to your favorite articles on your social media platforms to help us spread the word about this exciting work!

Tune into The *HPP* [Podcast](#) from anywhere! The *HPP* podcast has received rave reviews from followers as an innovative and refreshing way to take readers and students beyond the pages and learn more about the authors and explore their work! Upcoming episodes feature authors from our Arts in Public Health supplement, including: Exploring the Power of the Spoken Word with Ryan Petteway and Shanaé Burch. Other podcast series include Exploring PRIDE with *HPP* Authors and Editors and additional content from the Photovoice series.

Health Education & Behavior

HE&B just released its first ever [Scholars of Color Special Issue](#). “We, the editors and guest editors of *Health Education & Behavior*, are aware that racism in the creation of science is well-rooted and very difficult to change,” editor in chief Jesus Ramirez-Valles wrote in his editorial. “We are not naive about the limits of our efforts. At minimum, we want to show that we care about the production of knowledge and our public health colleagues and students of color.” The special issue features 14 open access articles. We hope you will share these articles with your colleagues and follow us on [twitter](#).



JOIN THE EVALUATION AND IMPLEMENTATION SCIENCE COMMUNITY OF PRACTICE!

Implementation science is the study of translating knowledge and evidence into local policies and practices. The COP members can share articles, tools and resources and guides to help researchers and practitioners better use evidence and evaluate those efforts. Please [join us!](#)

Communities of Practice

SHOUT OUT TO THE WORKSITE HEALTH COMMUNITY OF PRACTICE!

Workers and employers are seeking new ways to provide service while keeping their workforce and others safe. Get information for implementing COVID-19 procedures to prevent exposure, infection, and spreading. [NIOSH has COVID-19 resources](#) as well as resources from [The Occupational Safety](#)

and Health Administration (OSHA). The Worksite Health Education CoP was formed to encourage networking and exchange of information among health educators working in business, industry and other settings who are responsible for the health promotion and health education of employees. Please contact: co-chairs [Carol Cox](#) or [Rhonda Rahn](#).

CALL FOR VOLUNTEERS
SOPHE Committees

<ul style="list-style-type: none"> • Annual Conference Planning Committee • Advocacy & Resolutions Committee • Awards Committee • Bylaws Committee • Continuing Education Committee • Communications Committee • Ethics Committee • Finance Committee • Health Equity & Anti-Racism (HEAR) Taskforce • Strategic Planning Committee 	<ul style="list-style-type: none"> • History Committee • Membership Committee • Professional Development Committee • Professional Preparation Committee • Publications Committee • Research-Agenda Committee • Resource Development Committee • School Health Teacher Education (SHE) Advisory Comm. • National Committee on the Future of School Health Education
---	---

WELCOME NEW SOPHE DIRECTOR OF FUND DEVELOPMENT



SOPHE proudly welcomes **Amy Overby, MS, CAE**, as SOPHE's Director of Fund Development. She will be responsible for developing SOPHE's strategic approach to

fundraising including major gifts, corporate donations, planned giving, grant solicitation, and in-kind resources. Working with SOPHE leadership, she also will design, implement and track a plan that builds on SOPHE's giving programs; expand SOPHE's Affiliate Organization Memberships (AOM) and sponsorships/exhibits for conferences; and pursue grants that support SOPHE's strategic plan.

A native of Madison, Wisconsin, Amy has more than 30 years' experience in fundraising and working with boards and associations. Prior to her most recent role as CEO for the American College of Veterinary Pathologists, Amy was Vice President, Donor Engagement at the Madison Community Foundation where she led the donor engagement team to secure annual contributions ranging from \$5 to \$12 million. In her spare time, Amy also serves as Managing Director of Africasong Communications, Inc, a nonprofit multi-cultural arts and education organization that produces the Annual State of Wisconsin Tribute & Ceremony honoring Dr. Martin Luther King, Jr., at the state capitol.

[American School Health Association](#)

[American Public Health Association](#)

[SOPHE 23rd Advocacy Summit](#)

[SOPHE 2022 Annual Conference](#)

[IUHPE World Conference](#)

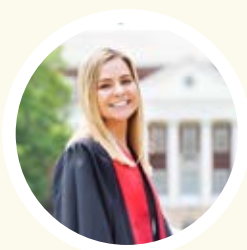
Members on the Move

Congratulations to **David Brown**, who is now a public health engagement specialist at Network of The National Library of Medicine Region 4.....to **Molly French** who has accepted a new position focused on housing and services for older adults and people living with disabilities at the National Association of Area Agencies on Aging (n4a)....**Bob Gold**, SOPHE Past President, who is retiring in June from the University of Maryland School of Public Health.....**Howard M. Fitts** who celebrated his 100th birthday in June.

WELCOME NEW SUMMER INTERNS

Kathryn Marie Costello

Kathryn Marie Costello earned her Bachelor's degree in Kinesiology from the University of Maryland in 2019. She decided to remain a Terp and continue her education to pursue a Master of Public Health in physical activity degree. Kathryn's main interests revolve around physical activity and its relationship to health equity and the built environment. After working with the organization, Girls on the Run, over the past two years her interests evolved to include the realm of health education and school health. During her SOPHE internship, she looks forward to expanding her skills in advocacy, health education curriculum development, and health promotion, while also gaining experience in areas of public health outside of her specific field of study. Although Kathryn has yet to decide on a specific professional path at this point, she hopes to apply her experiences at SOPHE to her chosen career in the public health arena.



Natalie Larkman

Natalie Larkman is a junior studying psychology and public health at John Carroll University in Cleveland, Ohio. Her academic interests are researching child health psychology and its effects on cognitive, behavioral and social outcomes, as well as the promotion of child and family coping with pediatric conditions through daily life. In her free time, Natalie enjoys running, traveling (before COVID-19), painting, and rollerblading. Natalie's internship goals are to strengthen school health programs and practices, help identify tools in assessing health needs within communities and schools, and assist in SOPHE's efforts in reducing chronic disease through policy, systems and environmental change. After this internship, Natalie plans to finish up her undergraduate degree and pursue a Psy.D program for pediatric health psychology.



SOPHE MOURNS THE PASSING OF MAL GOLDSMITH

Dr. Mal Goldsmith, 68, passed away peacefully on June 1, 2021 in Edwardsville, IL. Dr. Goldsmith taught at Southern Illinois University-Edwardsville from 1978 to 2010 and was highly involved in the health education profession at both the local and national levels, particularly Eta Sigma Gamma. He was published in multiple books and professional publications, but his true passion was mentoring health education students.



The family requests memorials to [Frontal Temporal Degeneration](#) or [Eta Sigma Gamma](#).